

16TH STREET NW BUS LANES Virtual Community Meeting

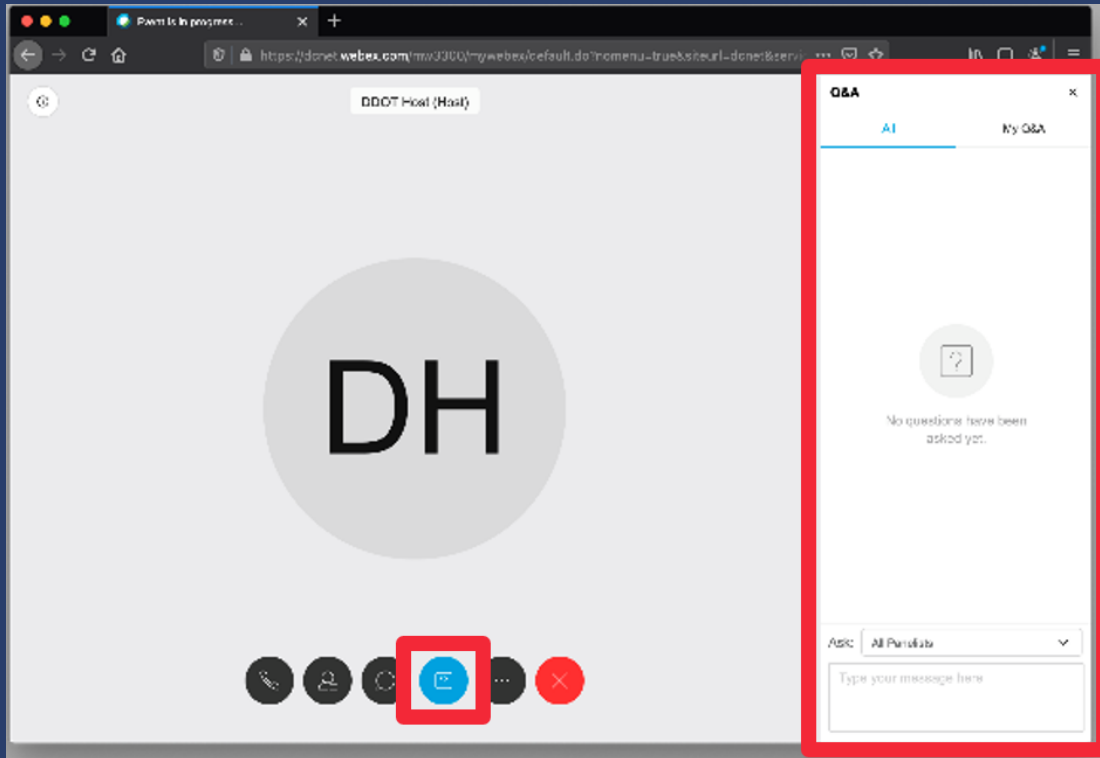
February 8, 2021

**16TH STREET NW
BUS LANES PROJECT**



d. WE ARE
WASHINGTON **DC** GOVERNMENT OF THE
DISTRICT OF COLUMBIA
MURIEL BOWSER, MAYOR

Directions for Spanish Speaking Community



Asistencia en Español

- *Si tiene preguntas escríbalas en el Q&A.*
- *Tomaremos sus preguntas al final de la presentación.*
- *Si esta en el teléfono, presione *3 para levantar su mano y pueda hacer su pregunta.*

AGENDA

- Welcome
- Project Team
- Purpose of this Meeting
- Objective
- Project Area
- Timeline
- What to Expect During Construction
- Sequence of Construction
- Safety/Maintenance of Traffic
- Neighboring Construction Projects
- Where to Find Construction Updates
- Outreach and Contacts

PROJECT TEAM



DDOT

James Sellars, Project Manager
Britnee Adams, Project Engineer



Parsons

Vladimir “Buddy” Vinluan, Construction Manager
Janay Smith, Assistant Construction Manager
Marissa Lampart, Public Outreach Liaison



TB&A

Stacee Hemby, Community Outreach
Jerrell Johnson, Community Outreach



Metro Paving
Contractor

PURPOSE OF THIS MEETING



- Introduce Project Team members
- Identify what to expect during construction
- Present key features to be constructed
- Report the Sequence of Construction
- Describe what information will be available on the Project Website
- Advise where to find the anticipated construction activity, travel advisories and construction schedule
- Show how to contact the Project team with any questions/concerns

PROJECT OBJECTIVE

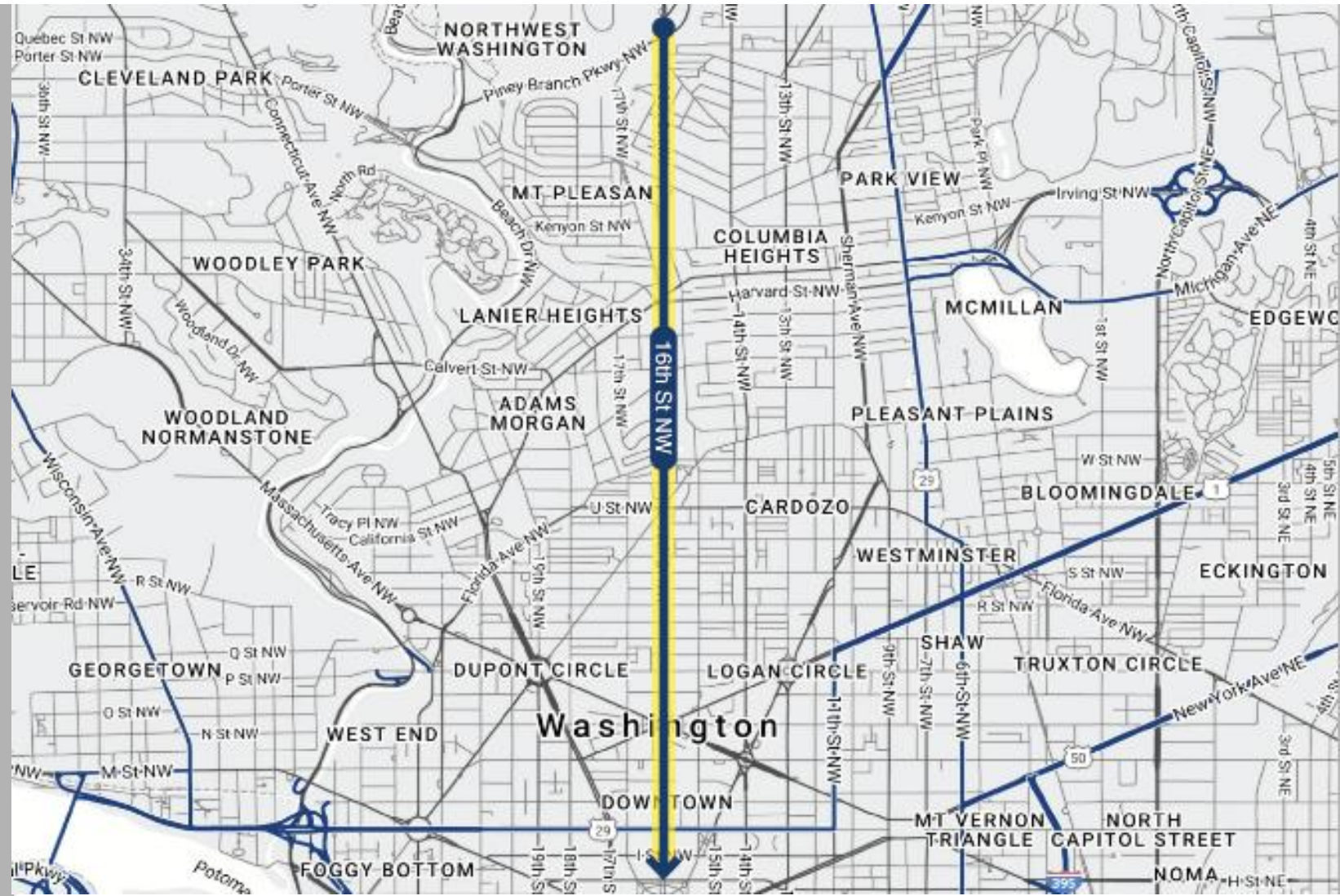
The bus routes along 16th Street NW serve more than 20,000 riders each weekday, making the corridor one of the busiest in the region.

The purpose of the 16th Street NW Bus Lanes project is to improve the performance and reliability of bus routes along 16th Street NW from Arkansas Avenue NW to H Street NW.

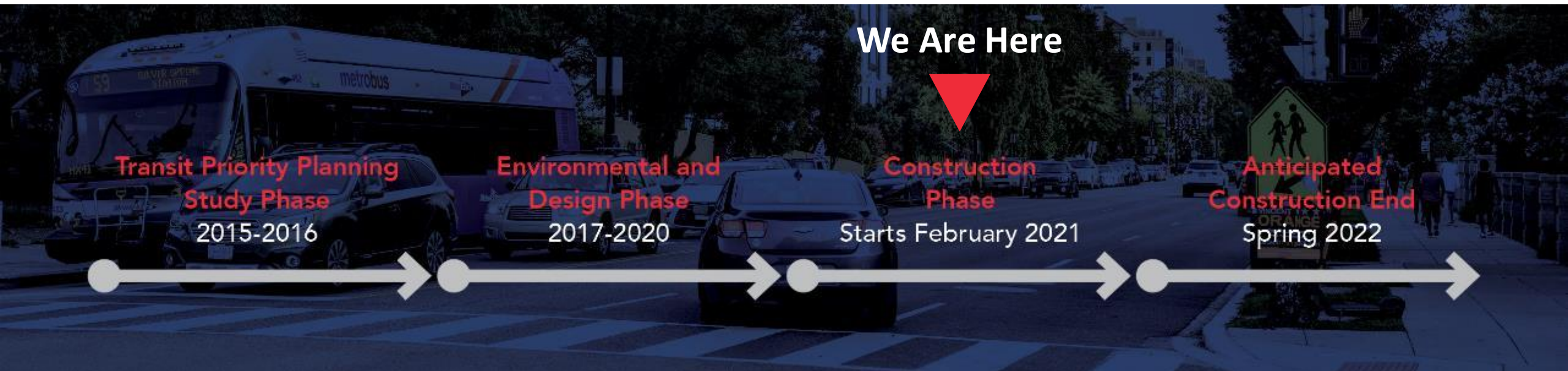


PROJECT AREA

The 16th Street NW
Bus Lanes corridor
extends 2.7 miles along
16th Street NW from
Arkansas Avenue NW
to H Street NW



PROJECT TIMELINE



WHAT COMMUNITY IMPACTS TO EXPECT DURING CONSTRUCTION

- Underground Utility Work
- Traffic Pattern Changes
 - Temporary changes, Daily
 - Permanent at Key Intersections
- Temporary Closure/Relocations of Bus Stops
 - Working with WMATA to ensure advanced notice
- Temporary Sidewalk Closures
 - Pedestrian detours
- Temporary Parking Restrictions
 - No parking adjacent to active work areas
- Signal and Electrical Sign Modifications
- Milling and Resurfacing of the Road
 - Daytime work to reduce noise disturbances



CONSTRUCTION HOURS



Sunday



No anticipated construction activity

Monday to Friday



7:00 a.m. to 7:00 p.m.
working behind traffic control barriers



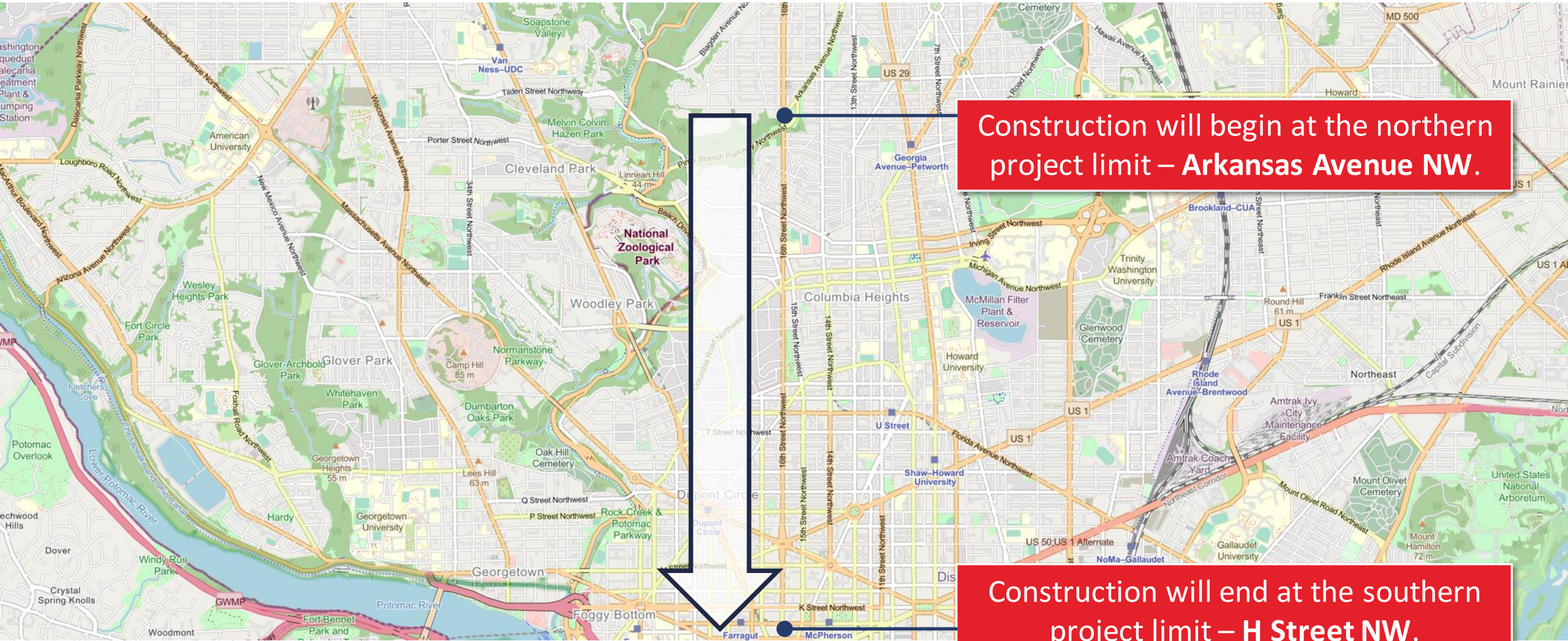
9:30 a.m. to 3:30 p.m.
working behind traffic drums
*Will minimize impacts to peak hour traffic



Saturday and Night Work

Special circumstances with District approval and advanced notice

CONSTRUCTION SEQUENCE



Construction will begin at the northern project limit – **Arkansas Avenue NW.**

Construction will end at the southern project limit – **H Street NW.**

PROJECT ACTIVITIES

Construction Sequence

- Initial Site Survey
- Utility Relocations
 - 🚧 Electrical
 - 🚧 Gas
 - 🚧 Stormwater
- Hardscape Work
 - 🚧 Sidewalk
 - 🚧 ADA ramps
 - 🚧 Curb/Gutter
- Construction at Intersections
- Signal/Electrical Sign Upgrades
- Milling, Paving and Striping



*Schedule updates will be provided on the **Construction** tab on the project website: www.16thstreetnwbus.com

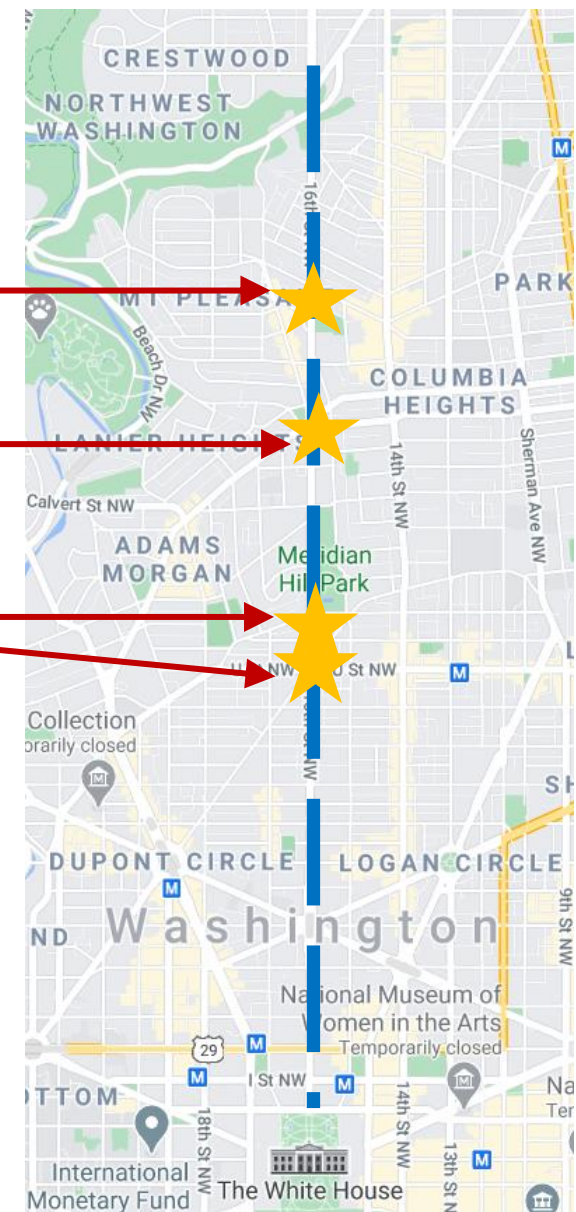
KEY INTERSECTIONS ALONG 16TH STREET



PINE STREET NW

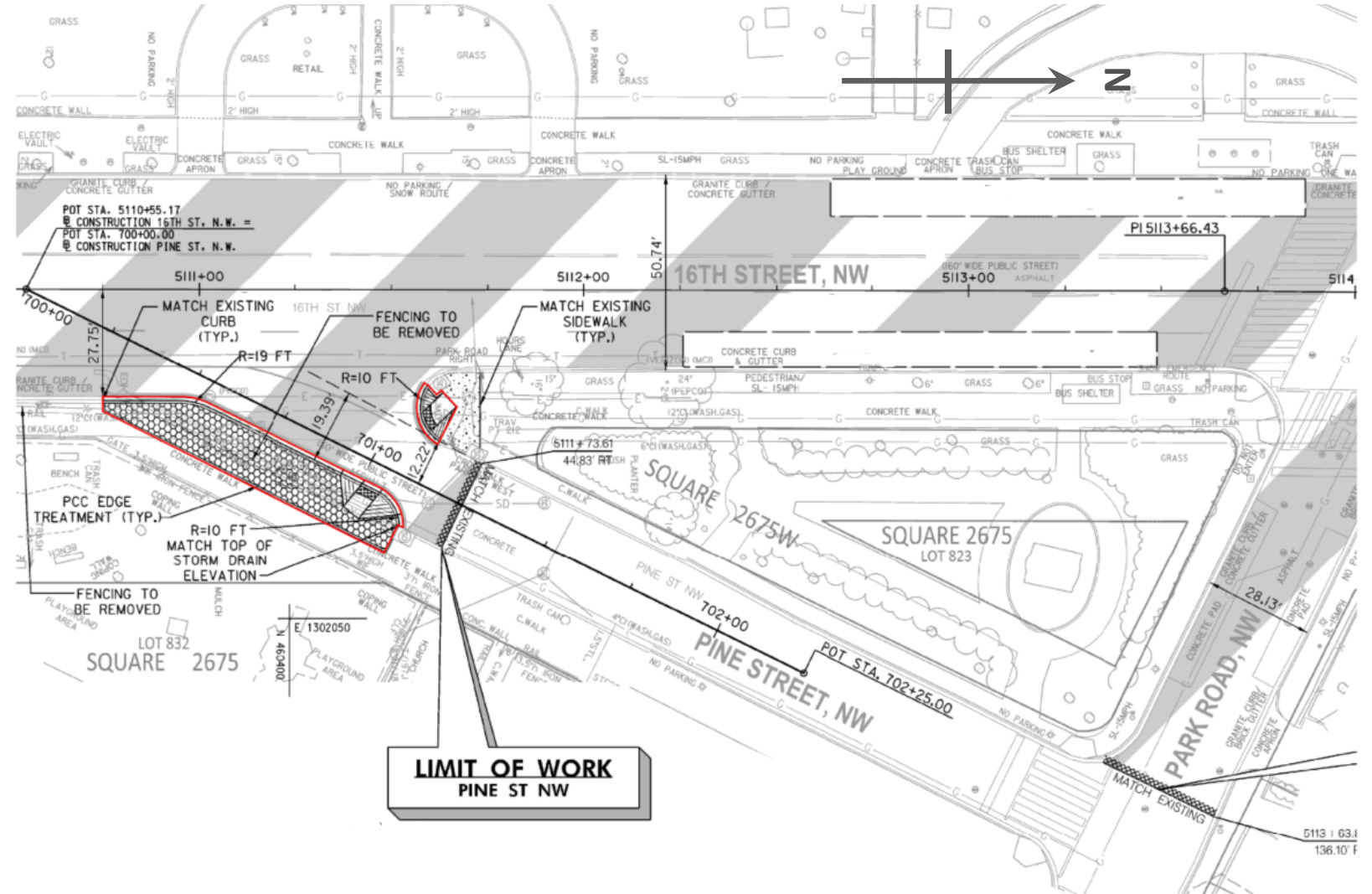
HARVARD STREET/COLUMBIA ROAD

U AND V STREETS, NW



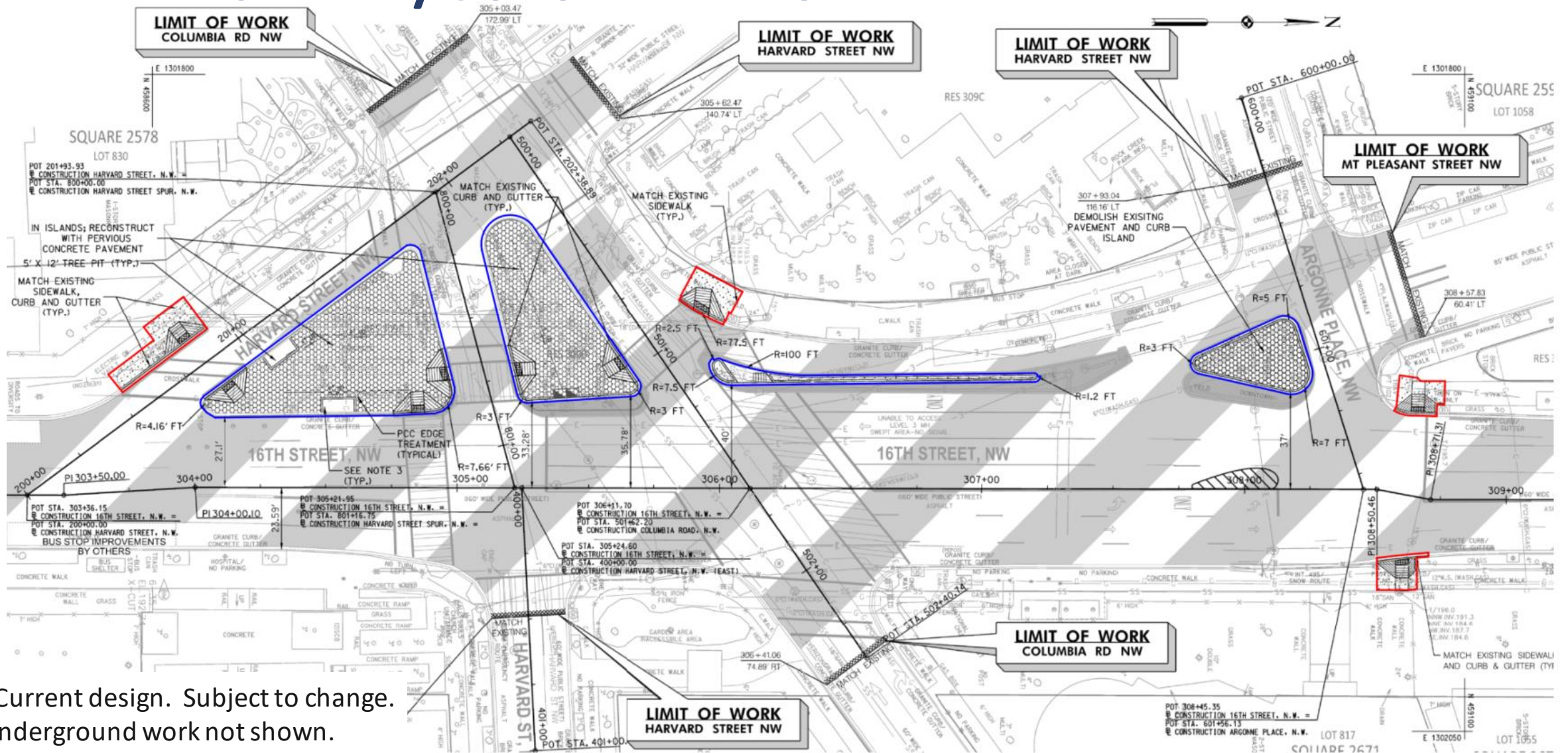
There are four intersections along 16th Street NW that will require most of the construction for this project.

PINE STREET NW



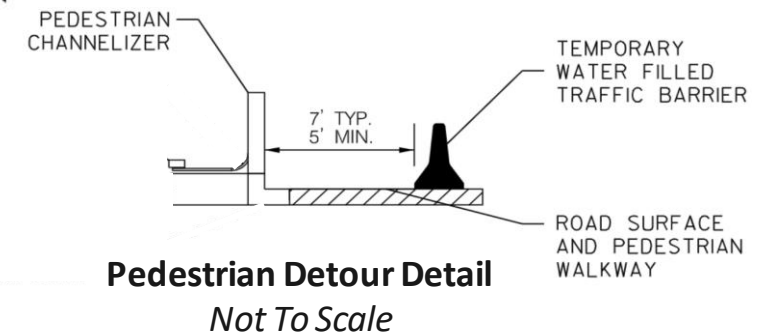
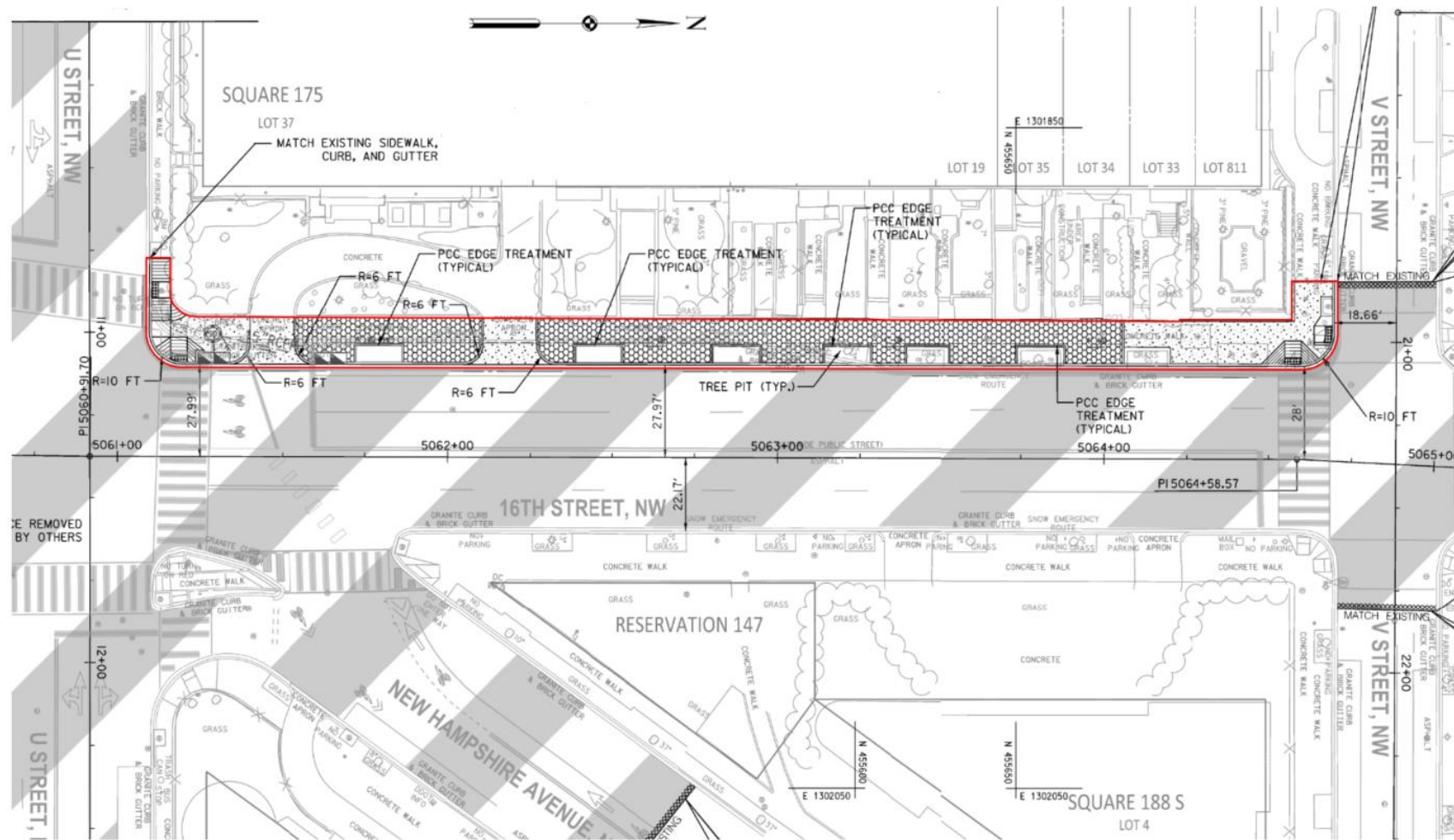
*Current design. Changes pending. Underground work not shown.

HARVARD STREET/COLUMBIA ROAD



*Current design. Subject to change.
Underground work not shown.

U AND V STREETS, NW



*Current design. Subject to change. Underground work not shown.

PAVEMENT RESURFACING/MARKING

Pavement resurfacing work will be performed during off-peak hours, one lane at a time.



SAFETY/MAINTENANCE OF TRAFFIC



Safety is a priority!

Construction Zone Precautions and Maintenance of Traffic

- Safe access for pedestrians at intersections
- Safe access to residences and businesses at all times
- Signage and flaggers to guide motorists, pedestrians and bicyclist safely around the work zone



WORKZONE SAFETY



Safety first!

- Contractor will adhere to CDC requirements and DC Health Department
- Approved Contractor Safety Plan
- Safety Manager onsite to monitor work
- Daily meetings with construction staff to go over safety plan protocols prior to beginning any work.



NEIGHBORING CONSTRUCTION PROJECTS

- **Washington Gas**
 - 16th & Harvard St
 - 16th & Pine St
 - **Apartment Renovations**
 - 16th St & Irving St to 16th St & Lamont St
 - **16th Street Playground Equipment**
 - 16th St & Sacred Heart Way
 - **PEPCO Capital Grid Project**
 - 16th St & W St to 16th St & T St
 - **Preservation of Meridian Hill Park**
 - **16th St. Bridge over Piney Branch**
- ← **Spring 2021**
- ← **Summer 2021**
- ← **Summer 2022**
- ← **TBD**

*Current work locations

**Anticipated completion dates, subject to change



WHERE TO FIND CONSTRUCTION UPDATES

www.16thstreetnwbus.com

16TH STREET NW
BUS LANES PROJECT



[Home](#)

[About](#)

[Design](#)

[Construction](#)

[Document Library](#)

[Contact](#)



INFORMATION PROVIDED:

- Anticipated work
- Temporary lane closures
- Pedestrian detours
- Bus Stop relocations
- Parking restrictions
- Schedule

STAYING CONNECTED WITH THE COMMUNITY

EMAIL

16thstreet.buslanes@dc.gov

PROJECT WEBSITE

www.16thstreetnwbus.com

SUBSCRIBE TO THE MAILING LIST:

- Major Project Milestones
- Construction Activity
- Traffic Pattern Changes



[Home](#)

[About](#)

[Design](#)

[Construction](#)

[Document Library](#)

[Contact](#)

Contact

Please contact James Sellars, Project Manager, at 16thstreet.buslanes@dc.gov or 240-534-5466 for questions and comments

Subscribe to Mailing List

Name

First

Last

Email

☐

I'm not a robot



reCAPTCHA
Privacy - Terms

Submit

16TH Street NW Bus Lanes Virtual Community Meeting



District Department of Transportation

www.16thstreetnwbus.com